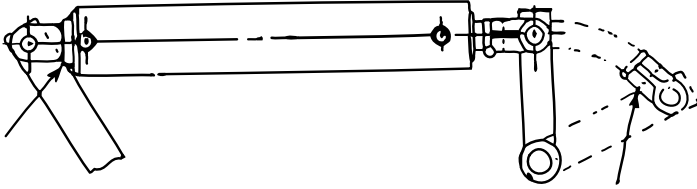


0A002770 CYLINDER

ITEM NO.	PART NO.	DESCRIPTION	QUANTITY PER CYLINDER
1	35890B	CLEVIS PIN .....	2
2	00082464	LOCK NUT .....	1
*3	ES0014/326	BACK-UP RING .....	3
*4	00080327	O-RING.....	2
5	0A001845	PISTON .....	1
*6	00080305	O-RING.....	1
7	0B000988	CYLINDER BODY .....	1

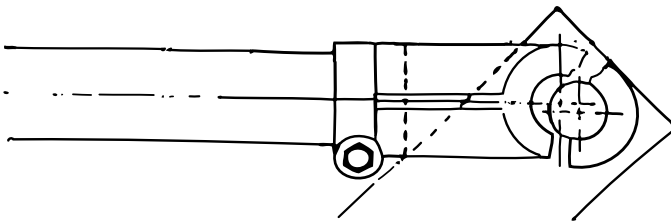
ITEM NO.	PART NO.	DESCRIPTION	QUANTITY PER CYLINDER
8	0A002526	PISTON ROD .....	1
9	0A001906	ROD GUIDE .....	1
*10	00080320	O-RING.....	1
*11	00081467	BACK-UP RING .....	1
*12	00083198	RETAINING RING .....	1
*13	00081544	ROD WIPER .....	1
-	0A001665	SEAL KIT (includes items marked with *)	

## Common Causes of Cylinder Damage



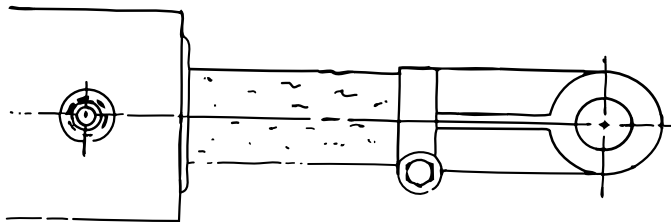
### BINDING

Binding can cause a bent rod. Before operating the cylinder under pressure, make sure there is sufficient mounting bracket clearance in all positions from retracted to fully extended.



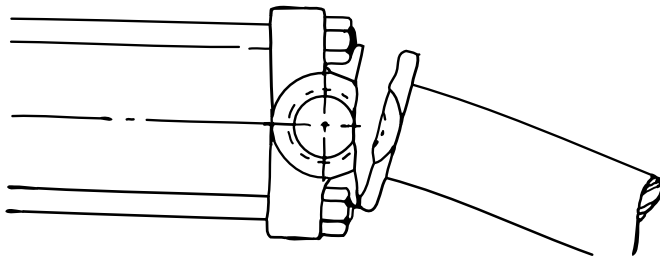
### IMPROPER CLEARANCE

Improper clearance can cause broken clevis castings. Cylinder must be mounted so as to allow free movement throughout its stroke.



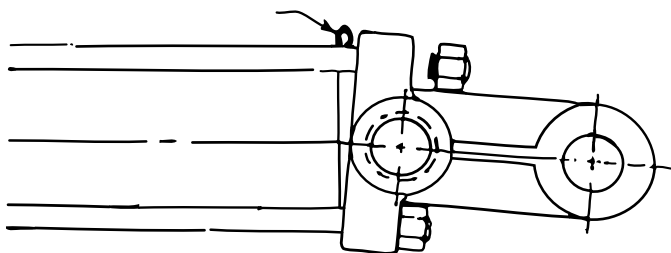
### ROUGH OR SCORED ROD

Rough or scored rod will cause damage to the seals and premature leakage.



### BENT PISTON ROD

Do not attempt to retract a bend rod, as it probably will cause the rod guide to crack or break.



### TOO MUCH PRESSURE

Do not exceed pressure rating of cylinder. Pressure beyond rated pressure could cause tie-rods to break or stretch and allow static seal to extrude. On welded-type cylinders, the retaining ring could be forced out of its groove or various other failures could occur.