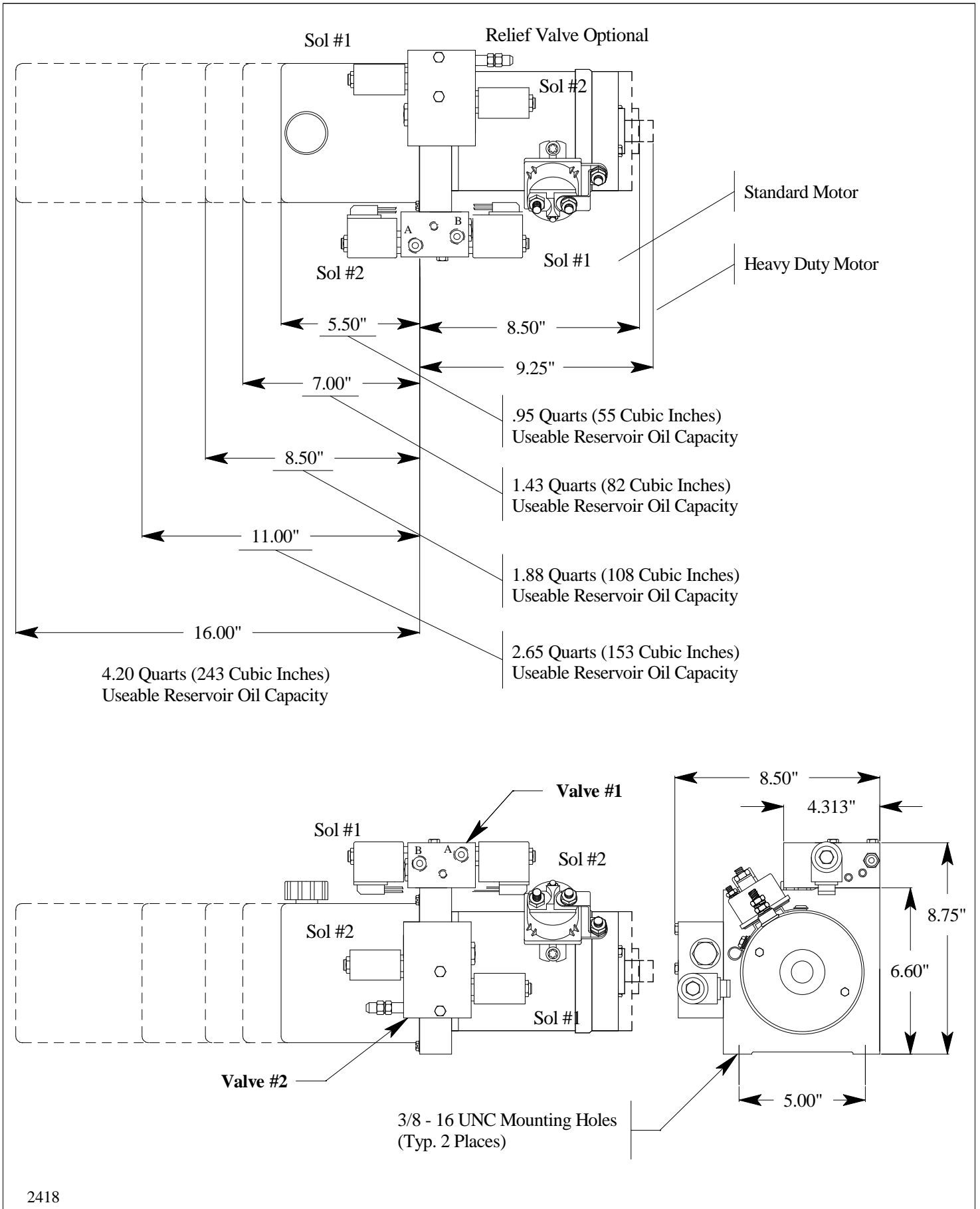
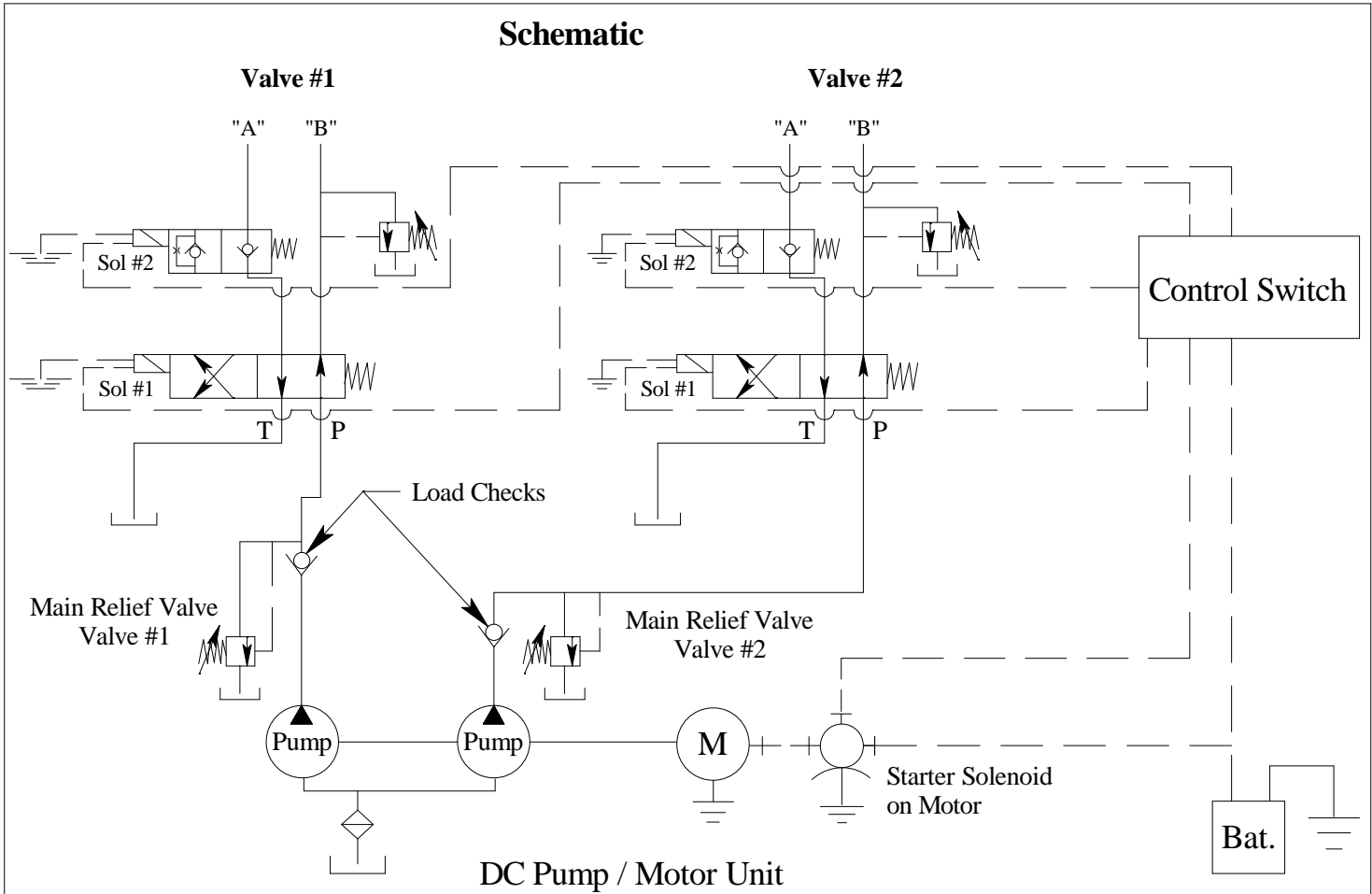


#20 Double Acting Solenoid Valves, 4-Way / 2-Position, Spool Type Cartridge, 1) 2-Way NC P.O. Poppet Type Cartridge Valve – DC Unit Layout



#20 Double Acting Solenoid Valves, 4-Way / 2-Position, Spool Type Cartridge, 1) 2-Way NC P.O. Poppet Type Cartridge Valve – Schematic



System Function

Valve #1 Control

Energizing Power unit and Sol #1, (on both valves) oil is directed to port "A" and oil from port "B" is directed back to tank ("T" Port).

Energizing Power unit and Sol #2, (on both valves) oil is directed to port "B" and oil from port "A" is directed back to tank ("T" Port).

Valve #2 Control

Energizing Power unit and Sol #1, (on both valves) oil is directed to port "A" and oil from port "B" is directed back to tank ("T" Port).

Energizing Power unit and Sol #2, (on both valves) oil is directed to port "B" and oil from port "A" is directed back to tank ("T" Port).

Valve Characteristics

- 1.) Uses one 4-way, 2-Position spool type cartridge valve and one 2-way NC P.O. poppet type cartridge valve, solenoid operated (each valve).
- 2.) Aluminum manifold block machined for one 4-way, 2-Position cartridge valve, two 2-way cartridge valves (plugging one cartridge cavity in this application) and with two 3/8" NPT ports (each valve).

Limitations

1. When lifting and/or holding a load, Use Port "A" on each valve.
2. Horizontal Mounting only.

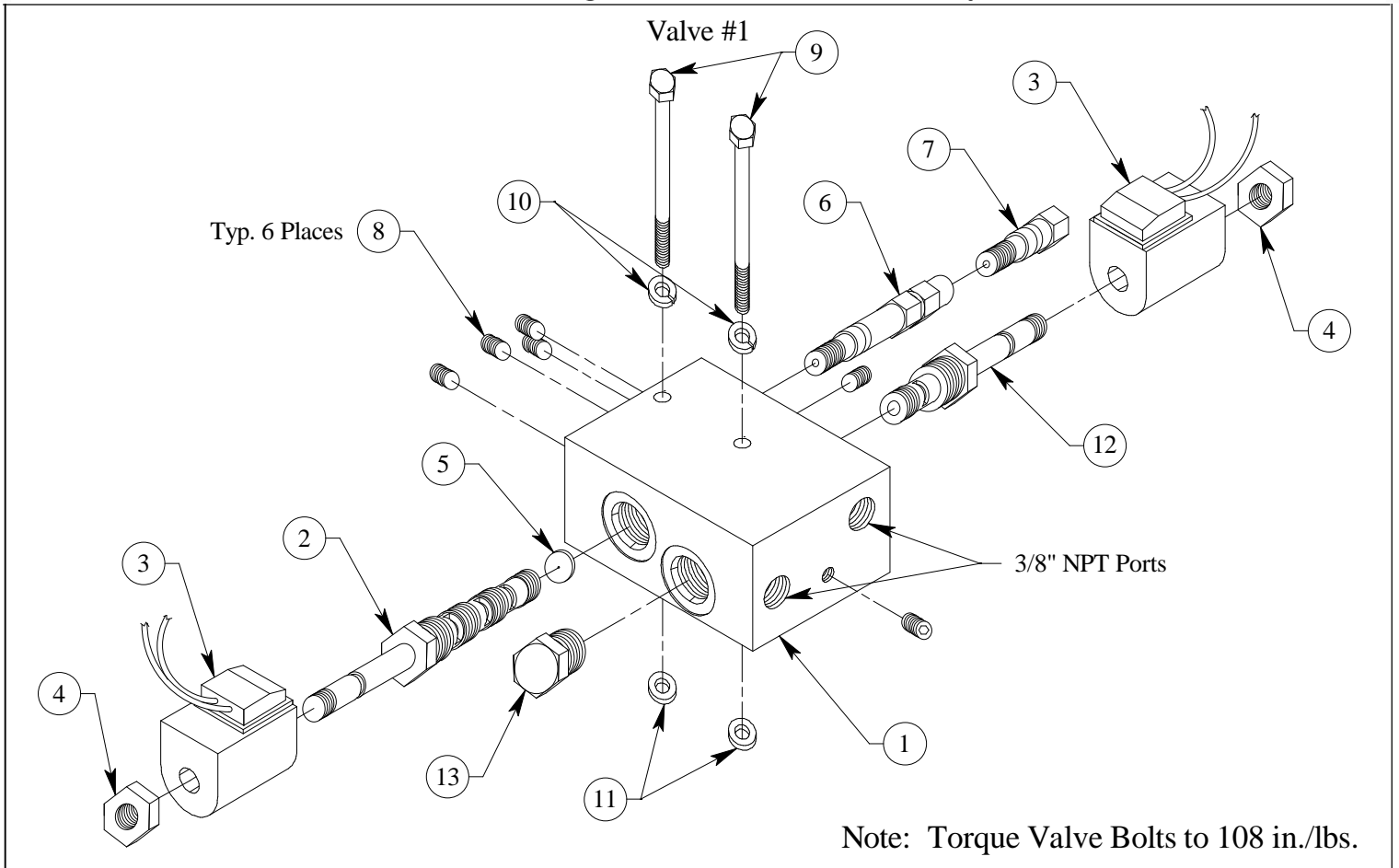
Application

1. Power up / Power Down
2. Power extend / Power retract

#20 Double Acting Solenoid Valves, 4-Way / 2-Position, Spool Type Cartridge, 1) 2-Way NC P.O. Poppet Type Cartridge Valve – Assembly

Drawing No.	Part No.	Quantity Req'd	Part Description
1	2497	2	Block, Solenoid Valve
2	2704	2	Cartridge Only, 4-Way, 2-Pos.
3	2705	4	12 Volt Coil
3B	2706	4	24 Volt Coil
3C	2707	4	110 Volt Coil
3D	2708	4	220 Volt Coil
4	1994	4	Nut Only, Cartridge Valve
5	2046	2	Orifice Disk, .050 Dia. (Optional) 3 Piston Units Only
6	1575	2	Relief Valve, Port (Optional)
7	1641	2	Plug, Relief Valve (Optional)
8	1579	12	Plug, 1/16" NPT W / Sealant
9	1937	4	Cap Screw, 1/4" - 20 UNC x 2.5" Long, Grade 8
10	1290	4	Washer, Lock (1/4" I.D.)
11	1606	4	O - Ring, #2 - 010 Valve Seal
12	2703	2	Cartridge Only, 2-Way, 2-Pos.
13	1969	2	Plug, -8 (3/4" - 16) O - Ring Boss
2419			

#20 Double Acting Solenoid Valves, 4-Way / 2-Position, Spool Type Cartridge, 1) 2-Way NC P.O. Poppet Type Cartridge Valve – Assembly



Note: Torque Valve Bolts to 108 in./lbs.

