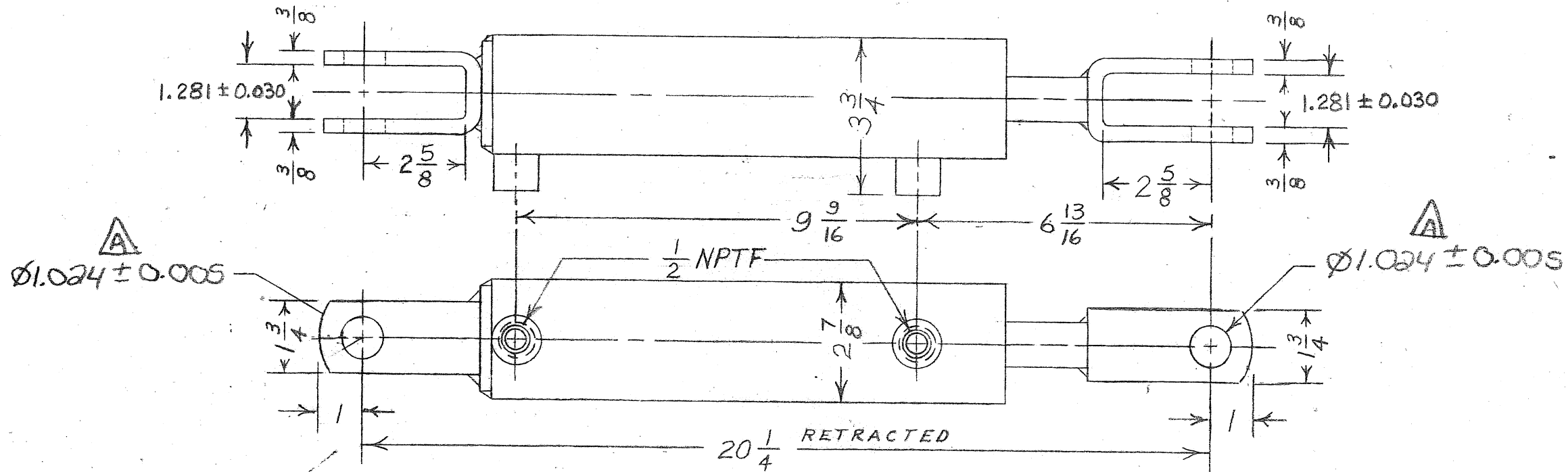


A-2805

---REQ'D./UNIT



BORE : 2 1/2"

STROKE : 8"

PAINT : RED

PINS : (FURNISHED)

(2) 35875X PIN

(4) 35879X HITCHPIN CLIP

ROD DIA. : 1/8"

ROD FINISH : CHROME

SEAL KIT : A-2439

CAUTION: DUE TO CRITICAL BUCKLING CONSIDERATIONS THE MAXIMUM LOAD AT FULL EXTENSION MUST NOT EXCEED LBS. (PRESSURE REF: PSI) WITH NO SIDE LOAD. IF SIDE LOAD IS PRESENT CONSULT FACTORY. RATED PRESSURE WHEN BUCKLING IS NOT A FACTOR: 2000PSI.

DO NOT SCALE PRINT

				MAT'L.	ENERGY MFG. CO., INC., Monticello, Iowa	
					CYLINDER, DOUBLE-ACTING 2 1/2" BORE x 8" STROKE	
C	PINS WERE (2) A-1931	2-28-08	ECN3563	DRAWN BY: B.G.T.	SCALE: 1/4" = 1"	A-2805
B	1.281 ± 0.030 WAS 1.250	3-12-97	J.R.	CHECKED BY: R.R.L.	DATE: DEC. 6, 1968	
A	Ø1.024 ± 0.005 WAS 1 1/16"	3-10-95	FCW-739	APPROVED BY: R.R.L.		
NO.	REVISIONS	DATE	APPROVED			